



DR. BABASAHEB AMBEDKAR TECHNOLOGICAL UNIVERSITY, LONERE
At. Po. Lonere, Tal. Mangaon, Dist. Raigad 402 103 MS (www.dbatuonline.com)

INVITATION FOR QUOTATION

Our Ref No.: DBATU/Store/Mech/Tom Lab/2026/352

Quotation For: Laboratory Equipment Machine.

Date of Opening: 26 / 02/2026.

12 FEB 2026

Date: 12 / 02/2026.

Due On: 25 / 02/2026.

Time: 11: 00 am.

To,

Sub: QUOTATION FOR THE SUPPLY OF STORE

Dear Sir,

Your quotation for the items listed overleaf, may please be submitted to the under signed, so as to reach this Office not later than 25 / 02/2026.

While submitting your quotation, the following procedure may please be observed and other points borne in mind.

01. The maker's name must be specified.
02. The "Terms and Conditions" for supply and delivery of stores, should be clearly indicated in the quotation, stating whether rates are, inclusive of all taxes, Packing and forwarding charge,s Freight charges, etc. or not, however rates offered as including all taxes will be more welcome.
03. If packing and forwarding charges are to be charged separately, it should be so clearly stated in your quotation.
04. Please mention clearly whether consignment would be Ex-Godown, Ex-Shop, of F.O.R. dispatching stations. Preferably terms offered as "Delivery of consignment of stores, on F.O.R.
05. Envelope should be clearly marked with our reference No and date of this quotation. It should also be superscripted as per the format given above.
06. The quotation would be opened as per date and timing given above, if desired by you, you may depute an authorized representative with a letter of authority to be present at the time of opening of the quotation at this Office on the aforesaid day, date & time.
07. Your quotation must be valid for a minimum 30 (Thirty) working days from the date of it's opening.
08. Quotation received after the date of opening may not be taken into consideration.
09. Items tendered should confirm to the specification shown in the attached list when and where, full or no specifications are indicated against items in the list. Kindly furnish your full specification in accordance with accepted standards against each item tendered. Where reference to catalogue is made, the relevant catalogues/ Pamphlets/ Literature should accompany the quotation.
10. Your quotation should be for all new items and not for second hand.
11. Please state whether items will be available Ex-Stock. If not the minimum period for delivery, or for supplying the items or stores.
12. It should be clearly stated whether GST, Insurance, Freight or packing and forwarding charges, or any other taxes and duties, etc. leviable.



13. It would be appreciated if illustrated catalogues/Literature etc is furnished with the quotation.
14. Expression to as "Complete with standard Equipment" complete with standard accessories "Equipment to" As good as should be avoided. If at all their use is unavoidable then it should be very specifically indicated as to what exactly they mean and what exactly would be supplied under them. Any ambiguity or vagueness should be avoided.
15. For convenience, kindly adopt while quoting the same serial Nos. as given in the list detailed below.

Thanking You.

Yours faithfully,

Chit
Registrar

Dr. Babasaheb Ambedkar Technological University, Lonere

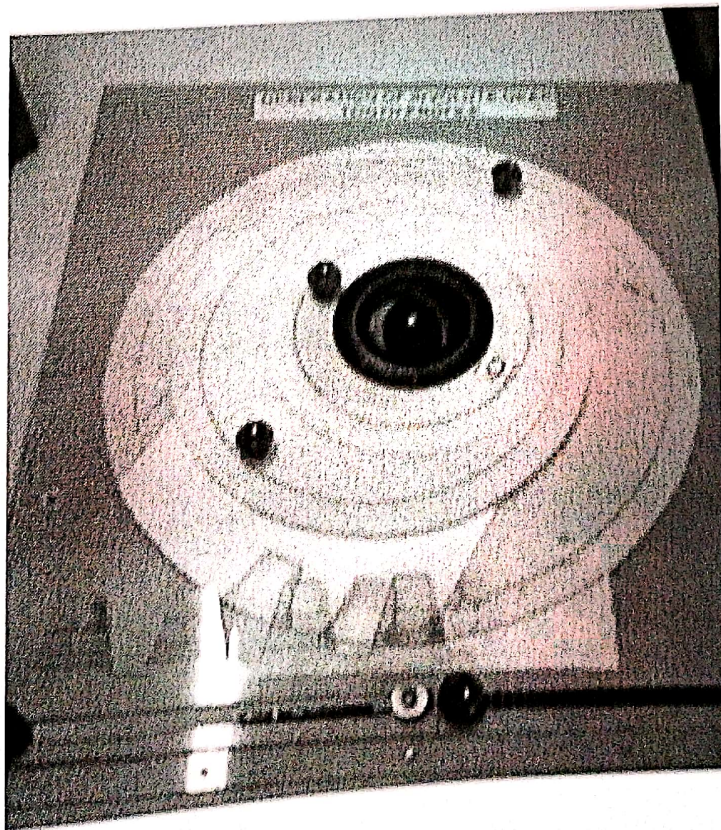
List of Items

Sr. No.	Description / Specification	Make	Approx. Qty Req.	Rate per / Each / Unit	Remarks
01.	Gear Tooth Profile Generator (As Per Attached Specification)	--	01	--	--
02.	Static & Dynamic Balancing Apparatus (As Per Attached Specification)	--	01	--	--
03.	Cam Analysis Apparatus (As Per Attached Specification)	--	01	--	--
04.	Motorized Gyroscope Apparatus (As Per Attached Specification)	--	01	--	--
05.	Single Slider Mechanism Model (As Per Attached Specification)	--	01	--	--
06.	Models (As Per Attached Specification)	--	01	--	--

Gear Tooth Profile Generator

Specifications:

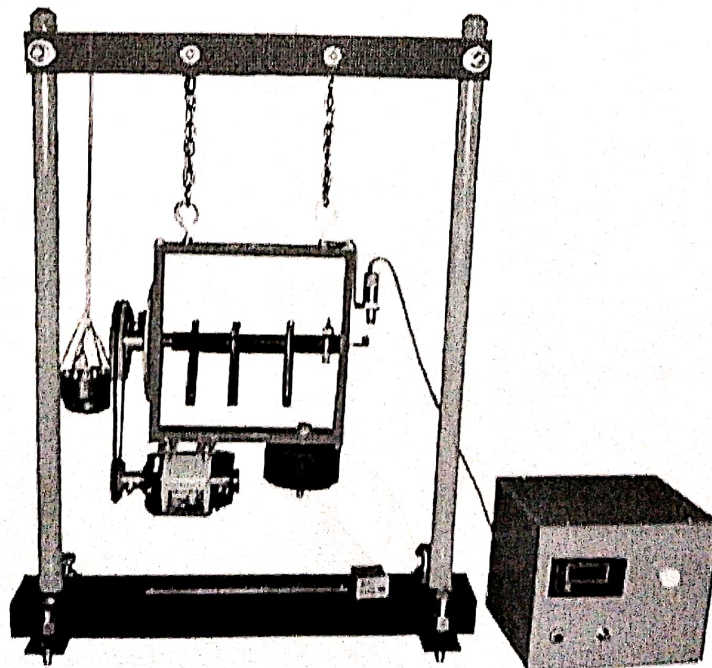
- This board illustrates the process of cutting of involutes Gear Teeth, by use of rack type cutter. It consists of 3 white acrylic discs A, B, C, having pitch circle diameter 450 mm, 300 mm & 200 mm respectively .
- A gear tooth profile with module 25mm can be traced out on a piece of paper placed between disc and cutter. An affect of Interference and Undercutting on correct profile of gear tooth can be studied from the profiles traced.
- Rack Cutter, Angular Scale, M S assembly , stand , plywood



Static and Dynamic Balancing Apparatus

Specifications:

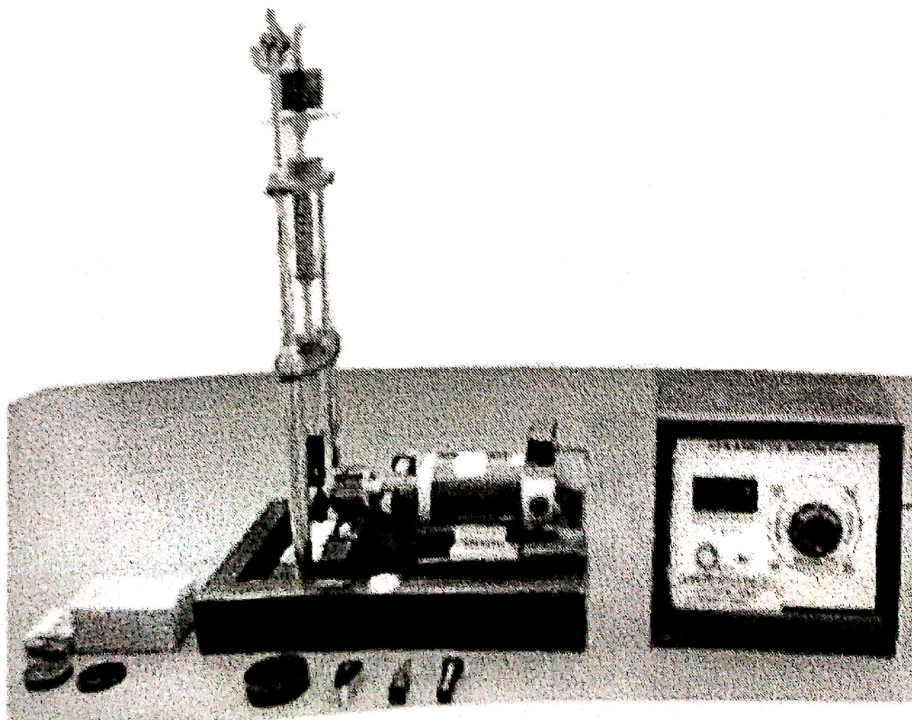
- Voltage-220/230 V
- Electricity -0.5 kW, Single Phase.
- Measurement Range-Up to 1 kg Eccentric Mass
- Temperature Range-Ambient
- Frequency-50 Hz
- Drive Motor -- FHP Motor, variable speed, with speed controller
- Balancing Weight 4 Nos. of Stainless Steel with different sized eccentric Mass for varying unbalance
- Equipment Materials-Mild Steel, Chrome Plated Components
- Display Type-Analog
- Dimension (L*W*H)-700 mm x 200 mm x 200 mm
- Weight-Approx. 25 kg



Cam Analysis Apparatus

Specifications:

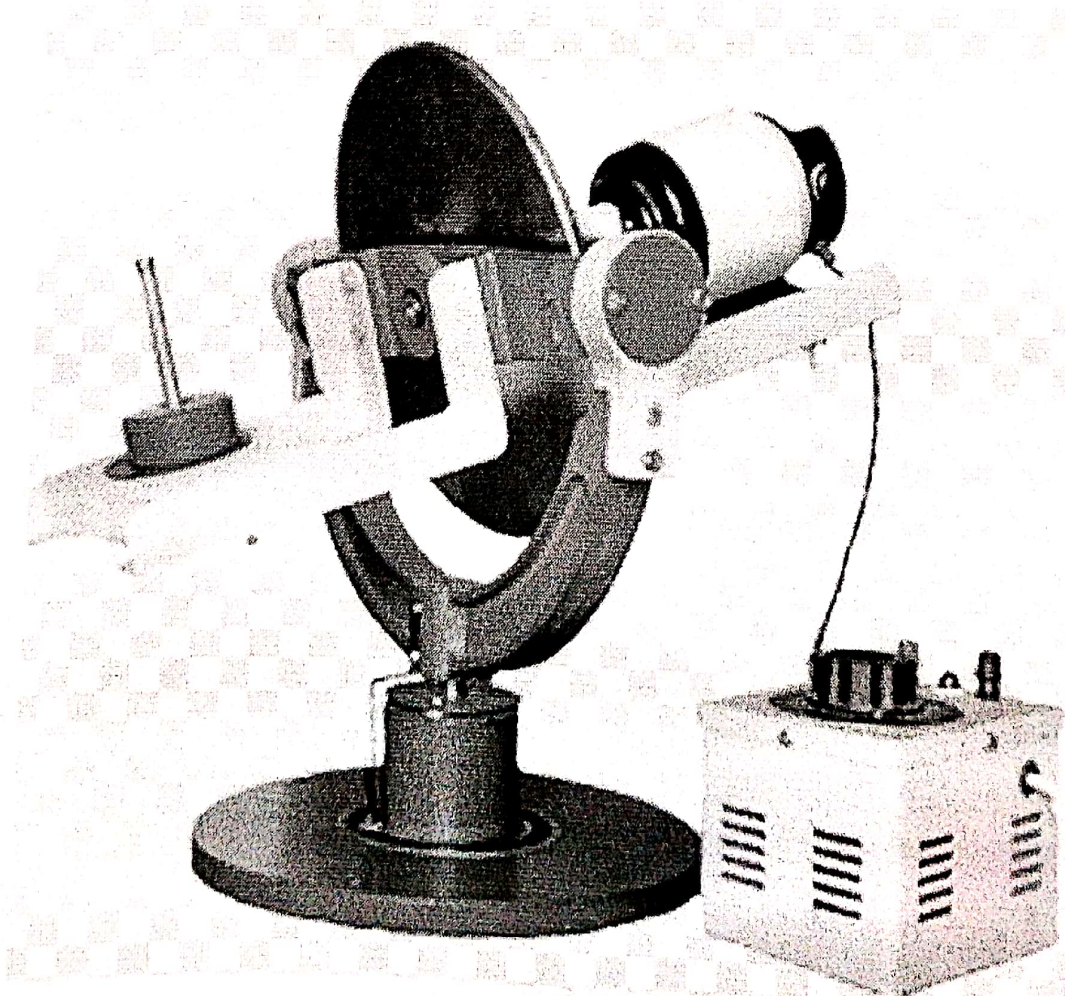
- Dial Indicator- analog
- Phase – Single Phase
- Range-1400 rpm or above
- 230 V, A.C. stabilized supply along with earthing connection.
- Bench area 0.5m x 0.5m x 0.5m height.
- Cam-Eccentric, tangent and circular ARC type - one each
- Follower-mushroom, flat faced and roller type - one each
- Cams and followers are hardened to reduce wear of the surfaces.
- Variable speed motor coupled to camshaft of suitable range and Variac (Motor Power-1/2 hp)
- A dial gauge to note the follower displacement.



Motorized Gyroscope Apparatus

Specifications:

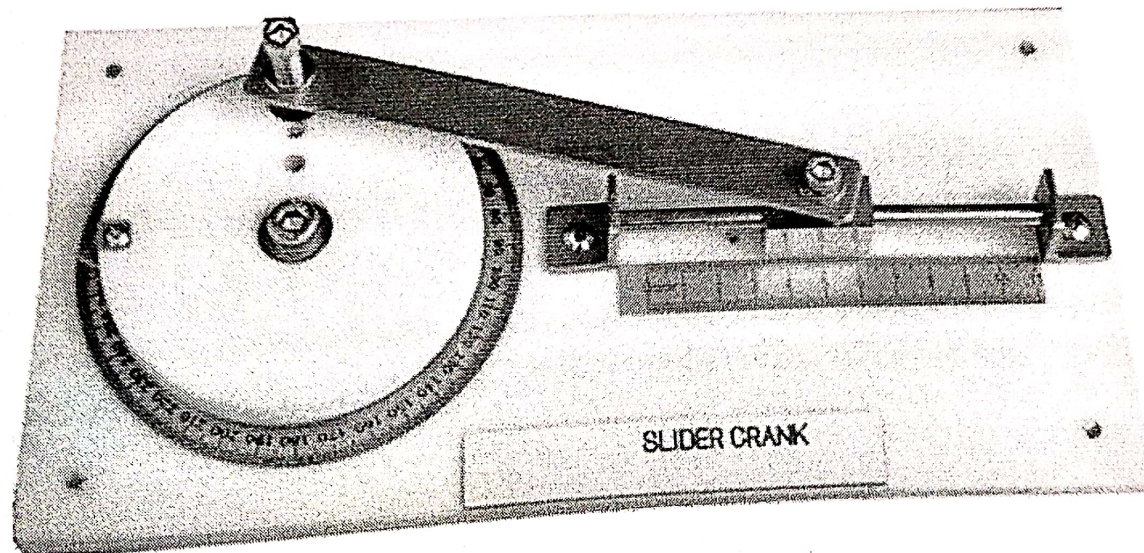
- Rotor dia. 250 mm free about 3 axis of rotation driven by variable speed motor.
- Dimmerstat to control the motor speed.
- Weights-0.2 kg, 0.5 kg and 1 kg.
- A technical manual accompanies the unit.
- 220V stabilized AC supply with earthing connection.
- Bench area-0.5 x 0.5m at working height.



Single Slider Mechanism Model

Specifications:

- Material- Mild Steel
- Model Board Dimension-400 x 300 mm (As per need)

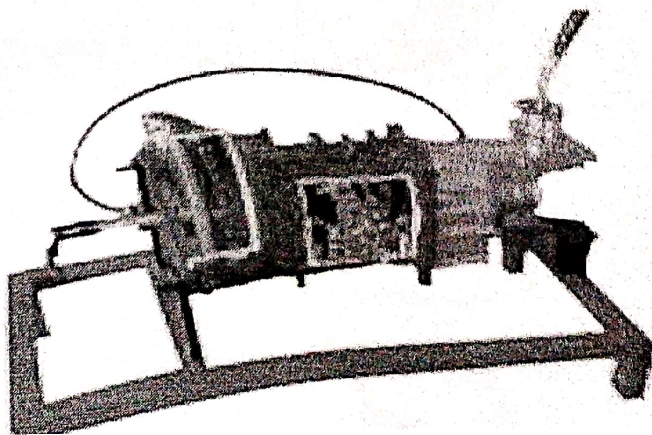


List of Models

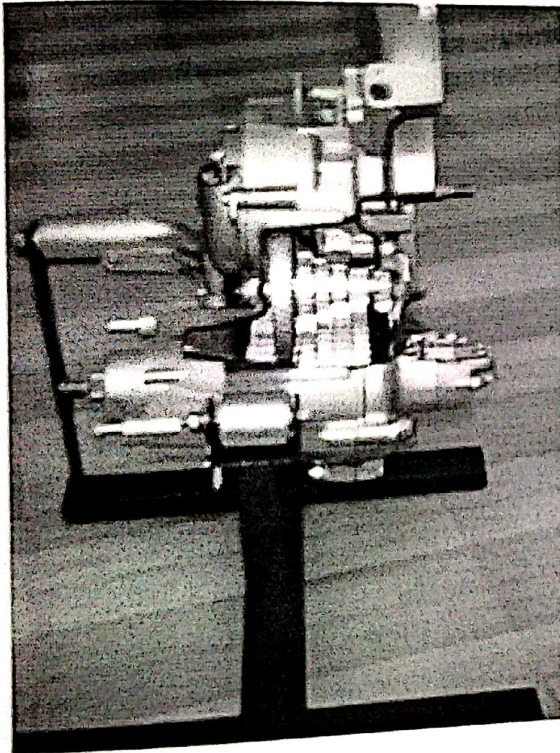
- Witworth Quick Return Mechanism
- Model Board Dimension-400 x 300 mm (As per need)



- Cut Section Model Synchromesh Gearbox
- Material Mild Steel



- Cut Section Model Constant mesh Gear Box
- Material Mild Steel



- Geneva Mechanism
- Model Board Dimension-400 x 300 mm (As per need)

